

Instructions for updating ICD9 codes to an Existing MDS installation

Summary

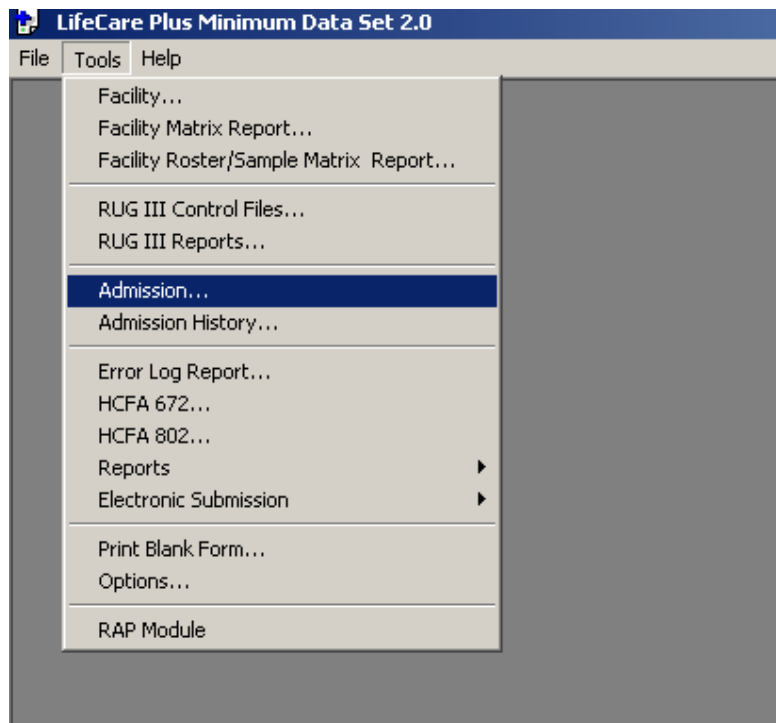
The following instructions are for updating [LSS](#) MDS/CarePlans® ICD9 codes on an **existing** installation of the MDS 2.0 application. It will update the server. It only needs to be run (successfully) once, and only from one workstation or server.

Prerequisites

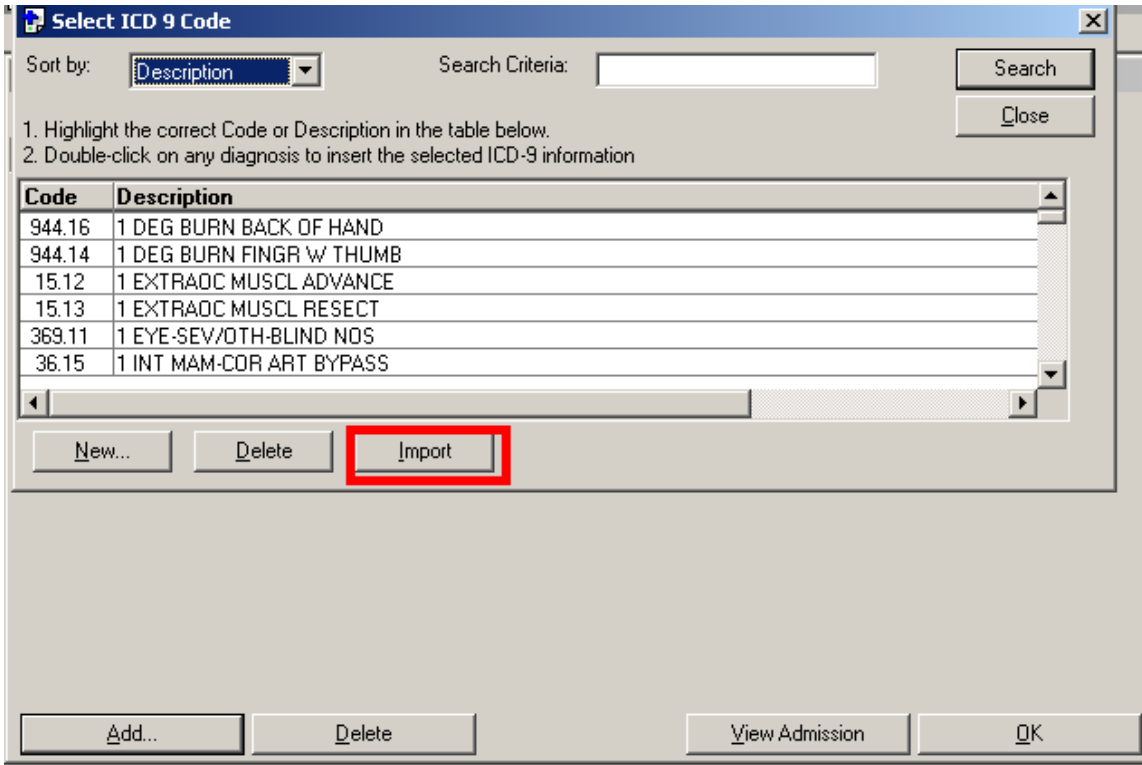
The file **ICD9vol111.txt** containing the ICD-9 codes to be imported should be located in the MDS2 installation folder, typically **C:\Program Files\lc2000\mds2**. The system being upgraded must be running a recent version of the LifeCare Plus MDS 2.0 application, version 4.6.5 or higher. Please call LifeCare Software Solutions, Inc. technical support on 847-885-8155 x19 if you need help to confirm that this update is compatible with the version you are currently using. You may find (depending on your OS and software settings) this version detail at **Start>Settings>Control Panel->Add/Remove Programs->LifeCare Plus Minimum Data Set 2.0>Click Here For Support Information.**

Update Instructions

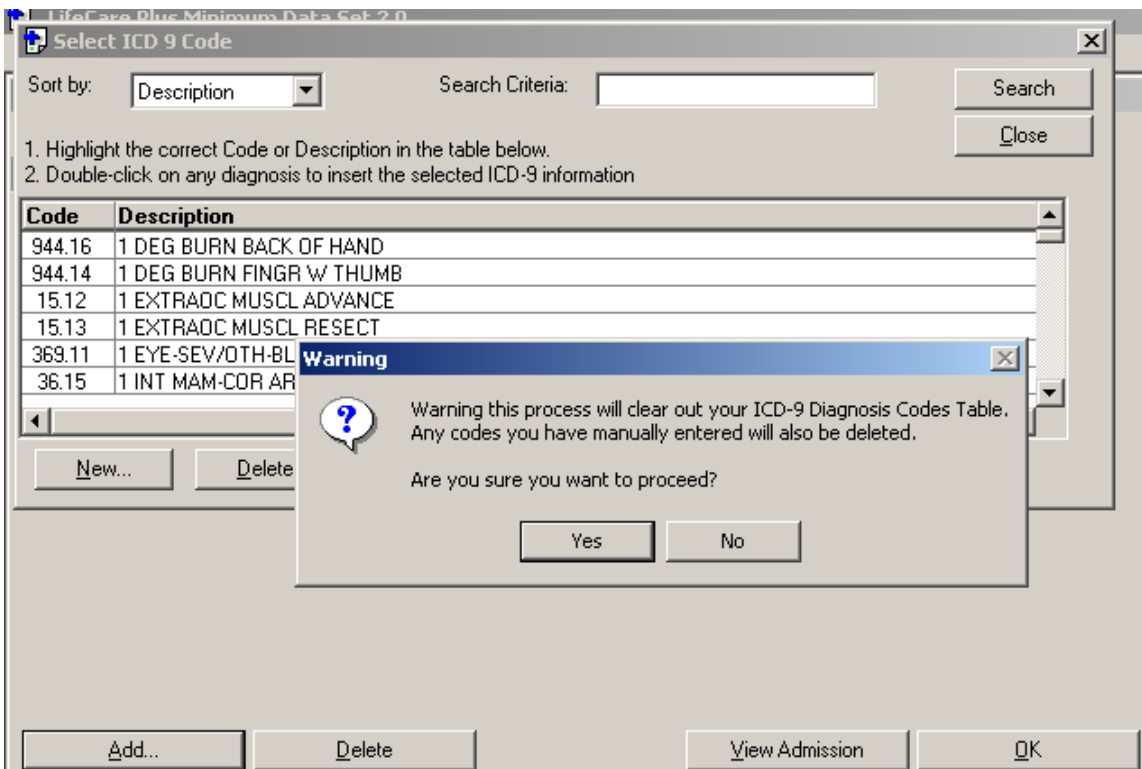
1. Launch LSS' *MDS* or *CarePlans*.
2. Click **Tools** on the menu. Select **Admission**.



3. Open any resident's admission window.
4. Click on "**View Diagnosis Codes**"
5. Click on the "**Add**" button. You will see the ICD9 code Dialog Box.



6. Click the "Import" button. This action will bring new ICD9 codes into your database. Note: You will get a warning message.



7. If you select YES the system will import the new ICD9 codes into your database. If you select NO, your database will not be updated.